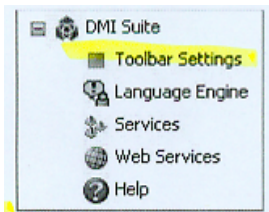

Welcome to DMI Suite (Core) Administration

Core Administration serves as the base settings collection area for all DMI Compliance Suite applications. Three sections, the Language Engine, Services and Web Services involve application-wide settings required DMI Suite usage. A partial section of the Administration menu depicts the DMI Suite (or Core) tree nodes.



[Toolbar Settings](#) provide links to the aspx web pages and image files required for the various DMI Compliance Suite applications. These settings are provided as defaults upon installation. Altering this information is only useful if the DMI Suite applications are installed on separate servers.

The Language Engine (Editor) provide simple controls for performing the following tasks (refer to the [Language Engine](#) help page):

- Designating alternate languages to be used
- Selecting a DMI C/S application to be used
- Selecting terms to be changed
- Supplying alternate language equivalents for each item used in the application
- Supplying alternate language equivalents for a single term across multiple languages
- Set up area for e-signature messages as they relate to the Entity and Permissions used in each application.

The Service Controller, housed in Services, runs in the server operating system and is responsible for stating service tasks for all DMI Compliance Suite applications. Refer to the help section on [Services](#) for more information.

The Web Services tool in the DMI Compliance Suite allows you to collect information for all of the DMI C/S applications to call for networks required for operation. This tool may also be used to share DMI C/S application information through external systems. Refer to the [Web Services](#) help page for detailed information.

The individual administration areas for all DMI Compliance Suite applications are covered in the Core User's Guide Online Help. Detailed information is provided on each application's system through their own administration guides, which are accessed from a help button on their corresponding administration tree nodes.



Refer the help page, [Entering Core Services Administration](#), to learn how to access the administration area.



Access the DMI Compliance Suite

The DMI Compliance Suite is installed on a network server and is accessed through Microsoft Internet Explorer in the same way that you access sites on the Internet. In the Internet Explorer Address bar, enter the network address given to you by your network administrator (e.g., <http://yourDMIServer>). This address opens an electronic signature dialog. For information on entering the Core administration, refer to the help page [Entering Core Services Administration](#). Please note that the Electronic Signature dialog box is called throughout the DMI Compliance Suite applications as a way to authenticate one's modifications, deletions, etc.



1. A read-only section, which is set up by a system administrator, displays above the log on fields. This specific Action, *Session/Use* is depicted here, is set up in the [Language Editor](#) section of each DMI Suite application.
2. Enter the log on ID and password provided to you for accessing the Compliance Suite. The domain name should default as set up by the system administrator.
3. Click OK to complete the log on process. After processing the main workspace, you are ready to enter any application where you have the appropriate access rights.
4. The Lock  button allows you to change the password in the dialog box unless an external authorization system is used.
5. The Comments  button allows you to add a comment when authenticating



Language Engine (or Editor)

The Language Engine (also referred to as the Language Editor) lets you modify essential text such as button labels and menu commands, displayed in DMI Compliance Suite applications. You can use the Language Editor as an aid translating English terms into the languages that are best understood by those using DMI C/S application. Because each DMI C/S user account specifies the individual's Language Editor does not include translation software.

In addition to translating English terms into different languages, you can use the Language Editor to accommodate differences in terminology from one facility to another, or between different department. For example, English terms that are commonly used in a plant based in Houston, Texas might differ widely from those used by Production operators.

The Language Editor also provides the area where e-signature definitions, used on the E-Signature and Authentication dialog box, are applied for Entity_Permissions settings so that they apply across the DMI C/S 2005 application system. Each application's Administration online help covers the Security and Permissions information (refer to [Core Security and Permissions](#) in this online help). The e-signature dialog box is covered in the [Access the DMI Compliance Suite](#) help page.

Language Editor applied rules

Certain circumstances and unique settings apply within the Language Editor.

- ❑ The default language is English. If an existing user has had their language deleted, the system uses the default. However, any terms that may be associated with the deleted language are saved as XML and may become available by recreating the deleted language.
- ❑ Alternate languages are set in the DMI C/S Security and Audit (SA) application. The SA Help contains detailed information on performing this function.
- ❑ Language's names may be altered or changed completely without affecting or deleting the associate terms.

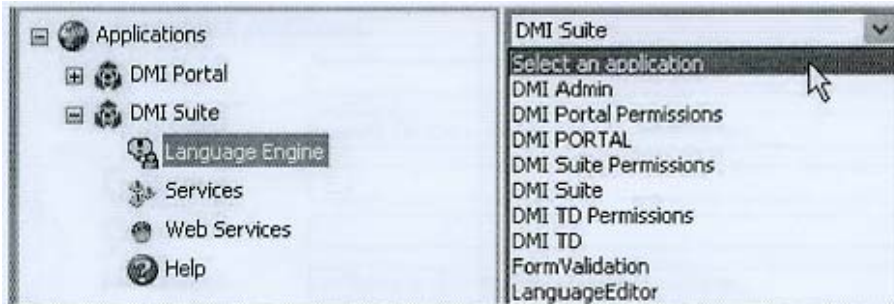


Using the Language Editor

The Language Editor is divided into three (3) sections: the application selection box, the label listing and the label/language setting section.

Application selection box

This appears on the left-hand side of the Language Editor.



1. Select the application (e.g., DMI Admin and DMI TD) or information (e.g., Form/Validation and LanguageEditor) needed for translation.
2. Continued....

